



April 2017 Letting Report

K. Joe Carpenter, Jr., P.E.
Director of P3/Program Delivery

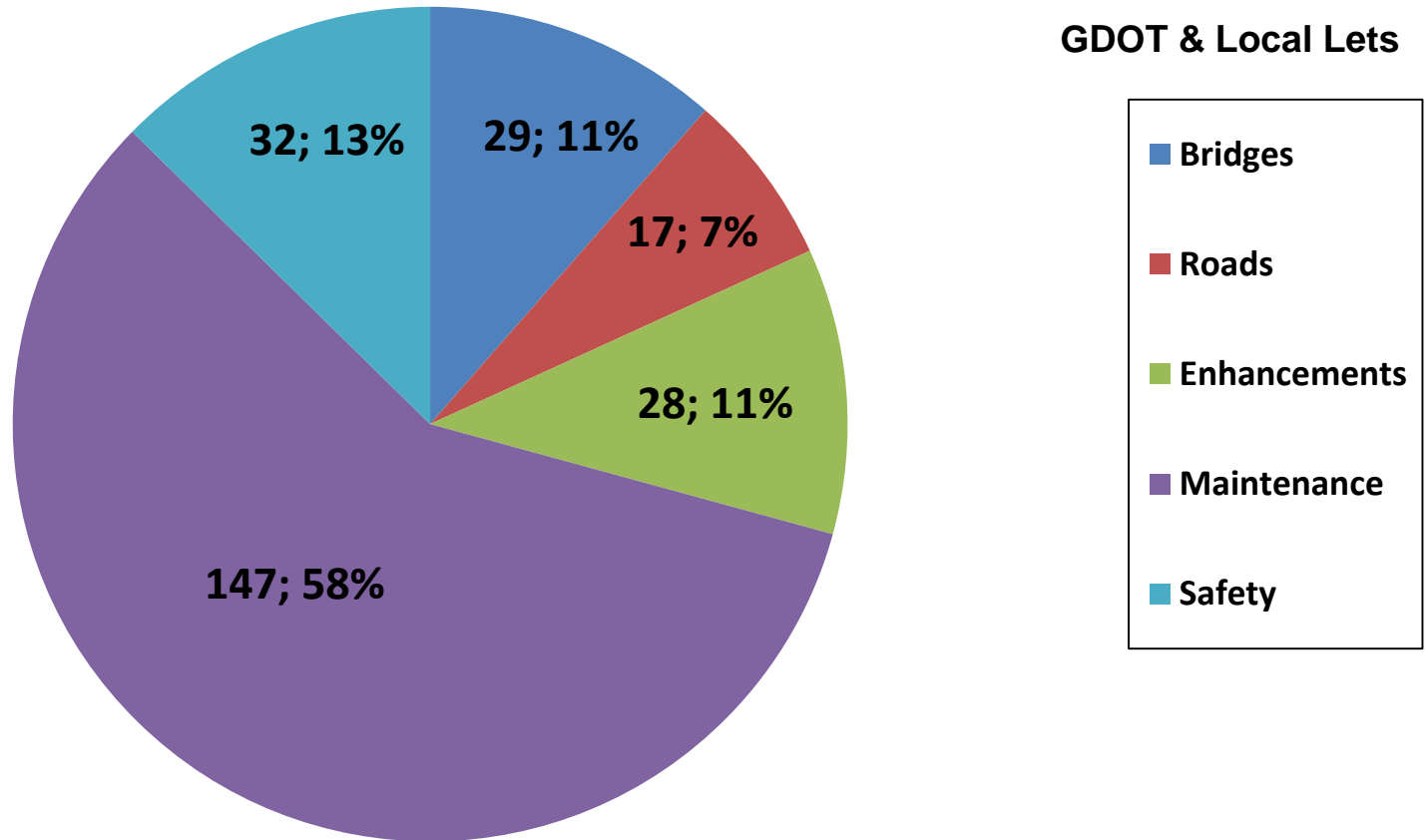
March 16, 2017



Fiscal Year 2017 Letting Report

Number of Projects Let in FY 2017

(Contractor Low Bid Award Data)



Total = 253

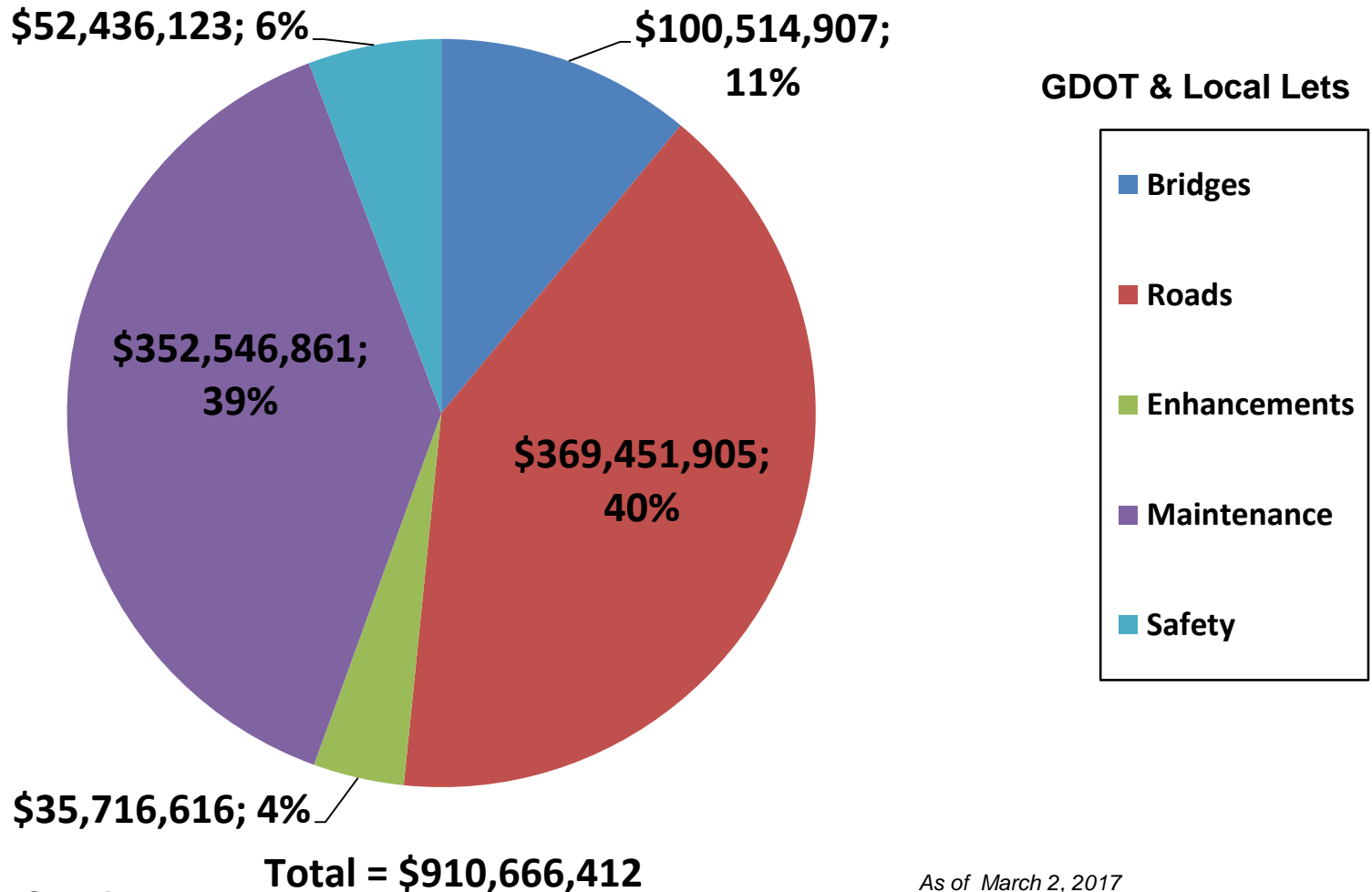
Does not include LMIG Projects

*As of March 2, 2017
Source Construction Bidding Administration*



Fiscal Year 2017 Letting Report

Dollar Amount of Projects Let in FY 2017 (Contractor Low Bid Award Data)



Does not include LMIG Projects

As of March 2, 2017
Source Construction Bidding Administration



February 2017 Letting Results

Summary	Presented to GDOT Board (Includes Adjustments)	Low Bid (Awarded to Contractor)	Low Bid w/Adjustments (Total Project Obligation)
GDOT Let (Project Count)	46	46	46
GDOT Let (Dollars)	\$243,393,718	\$257,991,024	\$280,585,070
Local Let (Project Count)	2	N/A Local Let	N/A Local Let
Local Let (Dollars)	\$4,997,637	N/A Local Let	N/A Local Let

*Low Bid Award Amount includes the Deferred and Awarded projects.
Does not include Engineering and Inspection, Utilities, Liquid AC, Incentives, LMIG and Rejected projects.



GDOT Let Projects

April 2017 Letting



GDOT Let Projects

April 2017 Letting

Project ID	Description	Primary County	Primary Work Type	Congressional District	Project Let By	Project Sponsor
M004628	SR 25 FROM ALTAMAHA RIVER TO 0.13 MI N OF SR 251	MCINTOSH	Resurface & Maintenance	001	DOT	GDOT
M005500	SR 26/US 80 FROM SR 25 TO CS 1468/ROSS ROAD IN SAVANNAH	CHATHAM	Resurface & Maintenance	001	DOT	GDOT
M005507	SR 520 FM W OF SEARS CIRCLE TO E OF MORGAN CIRCLE IN NAHUNTA	BRANTLEY	Resurface & Maintenance	001	DOT	GDOT
0008986	OCMULGEE HERITAGE TRAIL - WALNUT CREEK EXTENSION	BIBB	TE-Bike/Ped Facility	002	LOC	Macon City
M005206	SR 37 FROM SR 1 TO BAKER COUNTY LINE	CALHOUN	Resurface & Maintenance	002	DOT	GDOT
M005424	SR 26 @ OCHILLEE CRK & SR 49 @ BUCK CRK TRIB-CULVERT REPAIR	CHATTAHOOCHEE	Bridges	002	DOT	GDOT
M005321	SR 85 SPUR FROM SR 41 TO SR 85	MERIWETHER	Resurface & Maintenance	003	DOT	GDOT
M005502	SR 166 FROM CR 280/GREENWOOD DR TO CS 1094/BLANDENBURG RD	CARROLL	Resurface & Maintenance	003	DOT	GDOT
0010331	CS 862/PACE STREET FROM FLOYD STREET TO SR 12/US 278 - LCI	NEWTON	Bicycle/Ped. Facility	004	LOC	Covington
0012870	SR 9/US 19 FROM CS 3377/PHARR RD TO BUFORD-SPRING CONN RAMP	FULTON	Miscellaneous Improvements	005	DOT	GDOT
M005417	SR 14 @ NS #718047H - BRIDGE REHAB	FULTON	Bridges	005	DOT	GDOT

****Note: Bridge Bond Project**



GDOT Let Projects

April 2017 Letting

Project ID	Description	Primary County	Primary Work Type	Congressional District	Project Let By	Project Sponsor
0012660	I-285 @ SR 141	DEKALB	Operational Improvement	006	DOT	GDOT
M005702	I-85 FROM 1 MI N OF SR 155/DEKALB TO SR 140/GWINNETT	DEKALB	Resurface & Maintenance	006, 007	DOT	GDOT
0010855	SR 35 @ 5 LOC; SR 38 @ 3 LOC & SR 133 @ 1 LOC-SIGNAL UPGRADES	COLQUITT	Signals	008	DOT	GDOT
M004852	SR 26 FROM CR 17/JULIAN SIMPSON ROAD TO SR 87	BLECKLEY	Resurface & Maintenance	008	DOT	GDOT
M005322	SR 230 FROM SR 27/US 341 TO DODGE COUNTY LINE	PULASKI	Resurface & Maintenance	008	DOT	GDOT
M005346	SR 233 FROM SR 90/BEN HILL TO SR 112/WILCOX	WILCOX	Resurface & Maintenance	008	DOT	GDOT
M005499	SR 107 FROM CR 439/RHINE ROAD TO COFFEE COUNTY LINE	BEN HILL	Resurface & Maintenance	008	DOT	GDOT
M005505	SR 90 FROM SR 11 TO SR 215	BEN HILL	Resurface & Maintenance	008	DOT	GDOT
M005506	SR 215 FROM WILCOX COUNTY LINE TO SR 9	BEN HILL	Resurface & Maintenance	008	DOT	GDOT
0000305**	SR 66 @ CROOKED CREEK 3.2 MI NW OF YOUNG HARRIS	TOWNS	Bridges	009	DOT	GDOT
0007023**	SR 59 @ GROVE CREEK	BANKS	Bridges	009	DOT	GDOT

****Note: Bridge Bond Project**



GDOT Let Projects

April 2017 Letting

Project ID	Description	Primary County	Primary Work Type	Congressional District	Project Let By	Project Sponsor
0007319	SR 347/FRIENDSHIP RD FM MCEVER RD TO LAKE LANIER - PHASE II	HALL	Widening	009	DOT	GDOT
0010684	SR 17/SR 75 @ CHATTAHOOCHEE RIVER IN HELEN	WHITE	TE-Bike/Ped Facility	009	LOC	Helen
122017-**	SR 369 @ TWO MILE CREEK	FORSYTH	Bridges	009	DOT	GDOT
M005493	SR 60 FROM I-985 TO CS 647/WEST AVE	HALL	Resurface & Maintenance	009	DOT	GDOT
M005504	SR 53 CONN FROM SR 60 TO SR 53 IN GAINESVILLE	HALL	Resurface & Maintenance	009	DOT	GDOT
M005135	SR 8 FM CR 929/OCONEE CONNECTOR TO CR 344/EPPS BRIDGE PKWY	OCONEE	Resurface & Maintenance	010	DOT	GDOT
M005358	SR 10/US 78 FROM SR 47 TO SR 80	WILKES	Resurface & Maintenance	010	DOT	GDOT
0012798	SR 28 @ 8 CR LOCS IN RICHMOND COUNTY	RICHMOND	Signals	012	DOT	GDOT
M005320	SR 126 FROM SR 117 TO SR 46	LAURENS	Resurface & Maintenance	012	DOT	GDOT

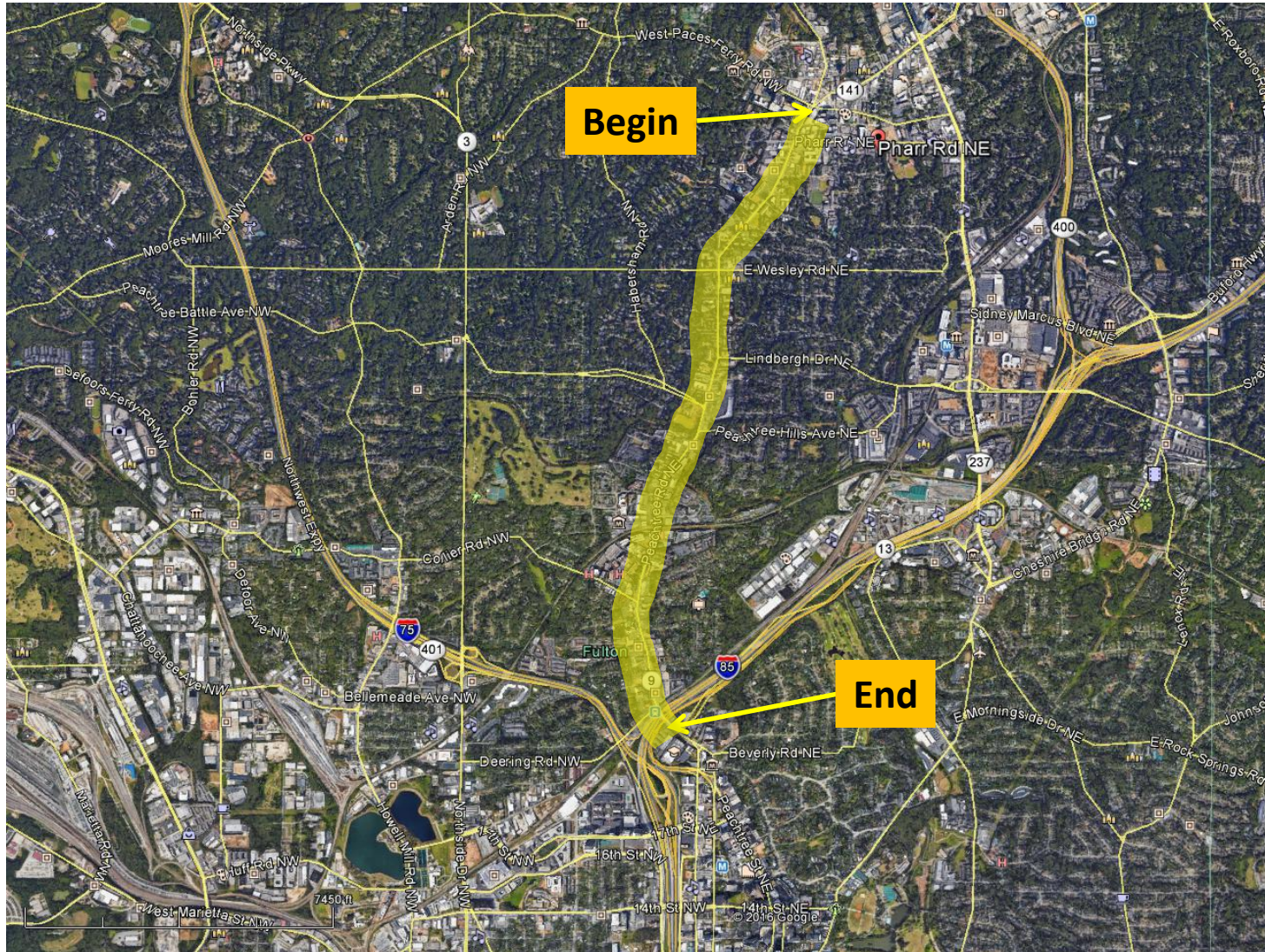
****Note: Bridge Bond Project**



SR 9/US 19 FROM CS 3377/PHARR RD TO BUFORD-SPRING CONN RAMP

Miscellaneous Improvements in Fulton County

Congressional District 5



I-285 @ SR 141 Resurfacing Project in DeKalb County Congressional District 6





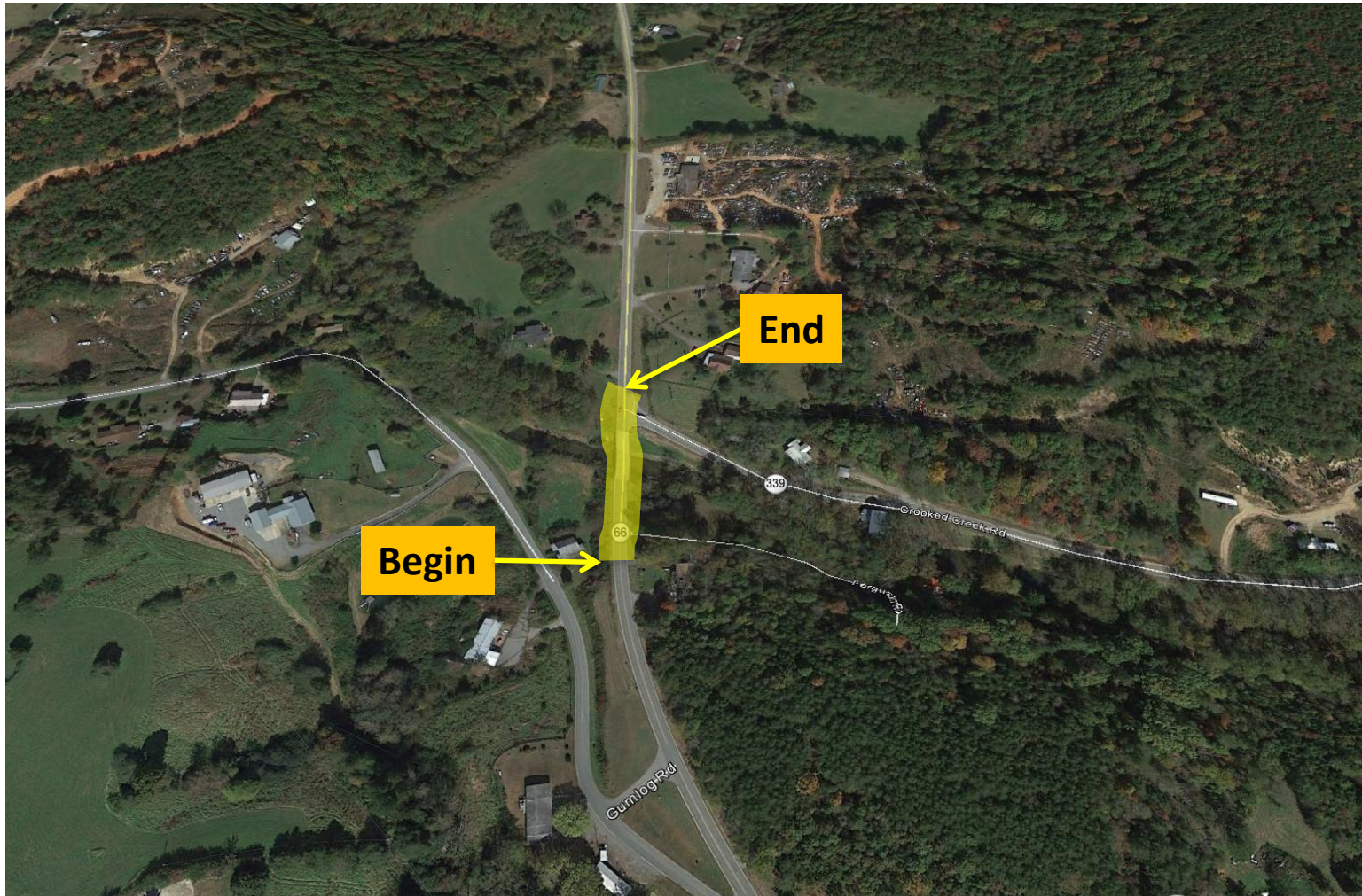
I-85 FROM 1 MI N OF SR 155/DEKALB TO SR 140 Resurfacing Project in DeKalb and Gwinnett Counties Congressional District 6 and 7



SR 66 @ CROOKED CREEK 3.2 MI NW OF YOUNG HARRIS

Bridge Replacement Project in Towns County

Congressional Districts 9



SR 66 @ CROOKED CREEK 3.2 MI NW OF YOUNG HARRIS Bridge Replacement Project in Towns County Congressional Districts 9 (Continued)



SR 347/FRIENDSHIP RD FM MCEVER RD TO LAKE LANIER - PHASE II Widening Project in Hall County Congressional Districts 9





SR 369 @ TWO MILE CREEK Bridge Replacement Project in Forsyth County Congressional Districts 9



SR 369 @ TWO MILE CREEK

Bridge Replacement Project in Forsyth County

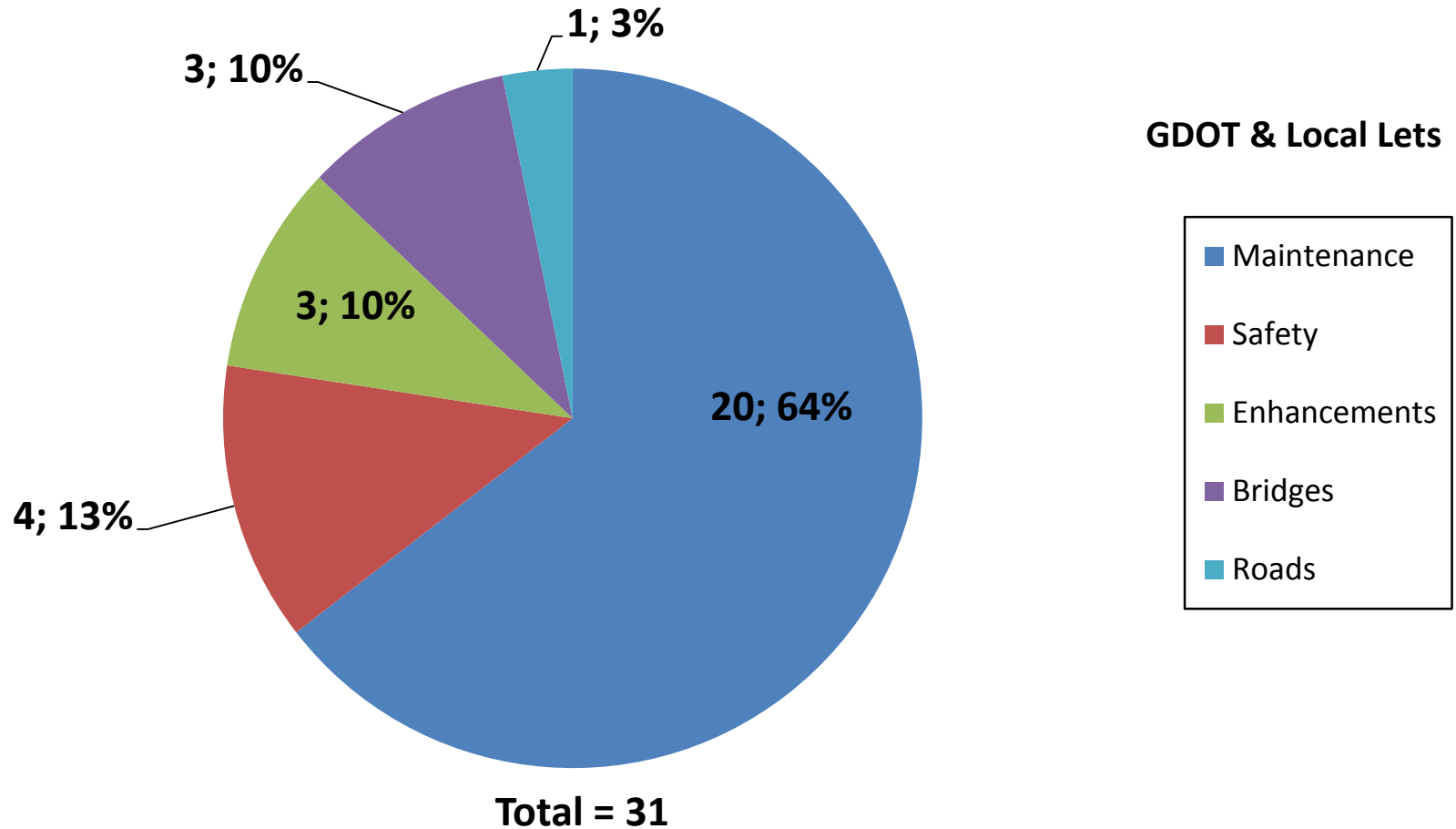
Congressional Districts 9 (Continued)





Fiscal Year 2017 Letting Report

Number of Projects April 2017 Letting



Does not include LMIG Projects

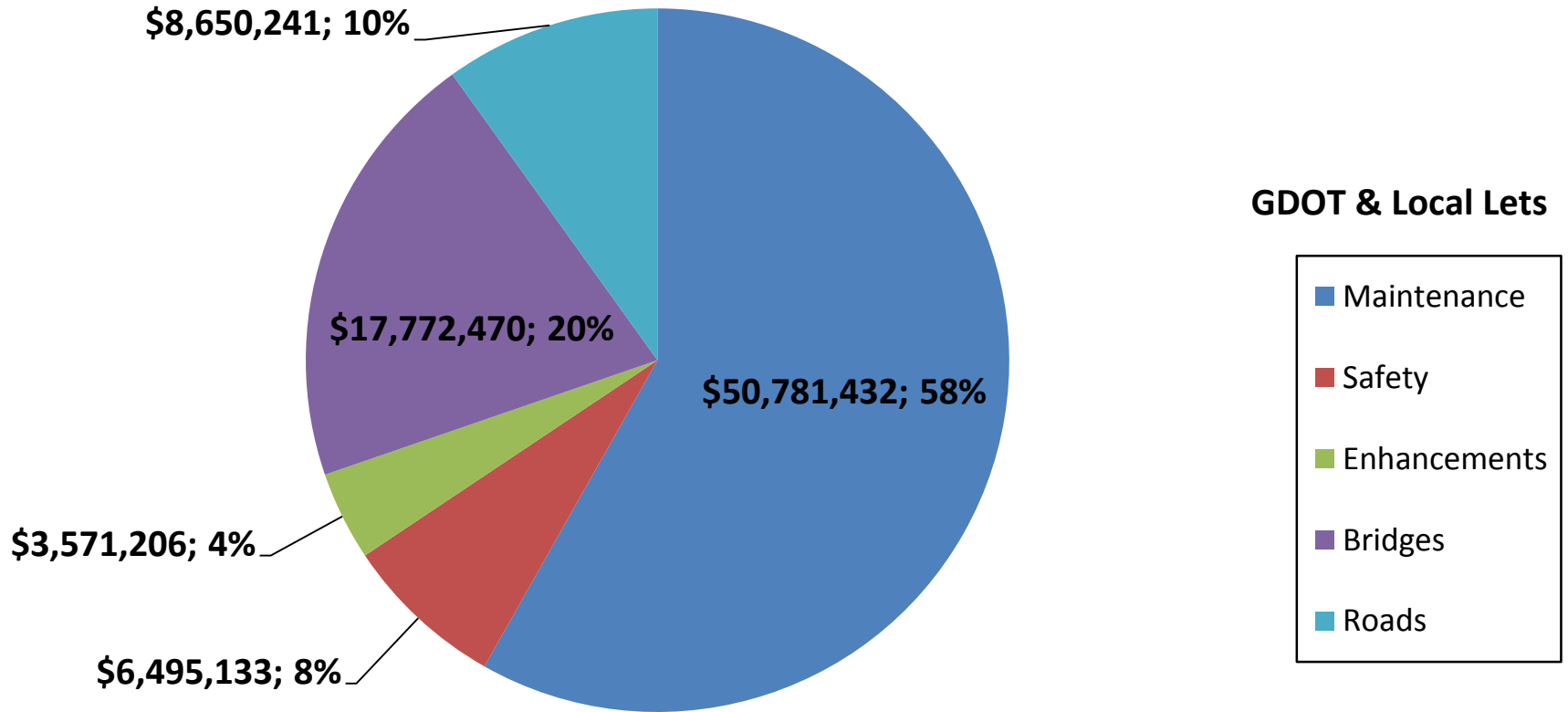
*As of March 8, 2017
Source TPro – Chief Approved FY '17 Letting List*



Fiscal Year 2017 Letting Report

Dollar Amount of Projects

April 2017 Letting



Total = \$87,270,482

Does not include LMIG Projects

As of March 8, 2017

Source TPro – Chief Approved FY '17 Letting List



Proposed Revisions To The Construction Work Program

**Jay Roberts
Director of Planning**

March 16, 2017



March 2017 CWP Revision

Board Revisions:

1. P.I. No. 0015536, Brantley County, SR 520/US 82 at Satilla River Overflow 14 miles E of Hoboken Bridge Replacement in Congressional District 1

Action: Addition to the Program

2. P.I. No. 0015540, Crisp County, SR 7/US 41 at Cedar Creek 1.5 miles S of Cordele Bridge Replacement in Congressional District 2

Action: Addition to the Program

3. P.I. No. 0015559, Muscogee County, SR 520/US 280 at Chattahoochee River in Columbus Bridge Replacement in Congressional District 2

Action: Addition to the Program

4. P.I. No. 0015563, Randolph County, SR 41 at Barge Creek 12 miles NE of Cuthbert Bridge Replacement in Congressional District 2

Action: Addition to the Program

5. P.I. No. 0015566, Talbot County, SR 190 at NS #718623W 2.5 miles W of Manchester Bridge Replacement in Congressional District 2

Action: Addition to the Program



March 2017 CWP Revision

Board Revisions:

6. P.I. No. 0015565, Talbot County, SR 22 at Richland Creek 6.7 miles E of Talbotton Bridge Replacement in Congressional District 2

Action: Addition to the Program

7. P.I. No. 0015564, Talbot County, SR 22 at South Fork Upatoi Creek 1 mile E of Geneva Bridge Replacement in Congressional District 2

Action: Addition to the Program

8. P.I. No. 0015537, Carroll County, SR 1/US 27 at Little Tallapoosa River in Carrollton Bridge Replacement in Congressional District 3

Action: Addition to the Program

9. P.I. No. 0015558, Meriwether County, SR 41 at Coleman Creek 4 miles S of Luthersville Bridge Replacement in Congressional District 3

Action: Addition to the Program

10. P.I. No. 0015560, Newton County, SR 81 at the Yellow River in Porterdale Bridge Replacement in Congressional District 4

Action: Addition to the Program



March 2017 CWP Revision

Board Revisions:

11. P.I. No. 0015546, Fulton County, SR 14 at NS #718047H in Atlanta
Bridge Replacement in Congressional District 5

Action: Addition to the Program

12. P.I. No. 0015553, Houston County, SR 7/SR 127/US 41 at Big Indian Creek in Perry
Bridge Replacement in Congressional District 8

Action: Addition to the Program

13. P.I. No. 0015552, Houston County, SR 7 at Flat Creek 3.5 miles SW of Perry
Bridge Replacement in Congressional District 8

Action: Addition to the Program

14. P.I. No. 0015533, Banks County, SR 59 at the Hudson River 6 miles SE of Homer
Bridge Replacement in Congressional District 9

Action: Addition to the Program

15. P.I. No. 0015532, Banks County, SR 51 at the Hudson River in Homer
Bridge Replacement in Congressional District 9

Action: Addition to the Program



March 2017 CWP Revision

Board Revisions:

16. P.I. No. 0015543, Elbert County, SR 77 at Coldwater Creek 9.5 miles N of Elberton Bridge Replacement in Congressional District 9

Action: Addition to the Program

17. P.I. No. 0015547, Gilmer County, SR 515/US 76 at Big Turniptown Creek in Ellijay Bridge Replacement in Congressional District 9

Action: Addition to the Program

18. P.I. No. 0015551, Hall County, SR 60 at the Chattahoochee River in Gainesville Bridge Replacement in Congressional District 9

Action: Addition to the Program

19. P.I. No. 0015556, Lumpkin County, SR 9/US 19 at the Chestatee River 10.25 miles NE of Dahlonega Bridge Replacement in Congressional District 9

Action: Addition to the Program

20. P.I. No. 0015557, Madison County, SR 8/SR 174 at the Hudson River 8.8 miles N of Danielsville Bridge Replacement in Congressional District 9

Action: Addition to the Program



March 2017 CWP Revision

Board Revisions:

21. P.I. No. 0015562, Rabun County, SR 28 at the Big Creek 13 miles NE of Clayton
Bridge Replacement in Congressional District 9

Action: Addition to the Program

22. P.I. No. 0015567, Union County, SR 60 at Suches Creek 13.1 miles SW of Blairsville
Bridge Replacement in Congressional District 9

Action: Addition to the Program

23. P.I. No. 0015554, Jefferson County, SR 78 at Williamson Swamp Creek
Bridge Replacement in Congressional District 10

Action: Addition to the Program

24. P.I. No. 0015555, Lincoln County, SR 79 at the Broad River 15.7 miles NW of Lincolnton
Bridge Replacement in Congressional District 10

Action: Addition to the Program

25. P.I. No. 0015568, Walton County, SR 83 at Polecat Creek 1 mile NW of Good Hope
Bridge Replacement in Congressional District 10

Action: Addition to the Program



March 2017 CWP Revision

Board Revisions:

26. P.I. No. 0015534, Bartow County, SR 3/US 41 NB at SR 293 in Emerson Bridge Replacement in Congressional District 11

Action: Addition to the Program

27. P.I. No. 0015535, Bartow County, SR 3/US 41 at SR 293/CS #340429D in Emerson Bridge Replacement in Congressional District 11

Action: Addition to the Program

28. P.I. No. 0015538, Catoosa County, SR 3 at Peavine Creek 3.7 miles E of Ft. Oglethorpe Bridge Replacement in Congressional District 14

Action: Addition to the Program

29. P.I. No. 0015539, Chatooga County, SR 48 at Racoon Creek 3 miles W of Summerville Bridge Replacement in Congressional District 14

Action: Addition to the Program

30. P.I. No. 0015542, Dade County, SR 136 at Lookout Creek Bridge Replacement in Congressional District 14

Action: Addition to the Program



March 2017 CWP Revision

Board Revisions:

31. P.I. No. 0015541, Dade County, SR 58 at Squirrel Town Creek 4 miles NE of Trenton Bridge Replacement in Congressional District 14

Action: Addition to the Program

32. P.I. No. 0015544, Floyd County, SR 293 at Dykes Creek 5.4 miles NE of Rome Bridge Replacement in Congressional District 14

Action: Addition to the Program

33. P.I. No. 0015561, Polk County, SR 101 at Euharlee Creek Tributary in Rockmart Bridge Replacement in Congressional District 14

Action: Addition to the Program



April 2017 CWP Revision

Board Revisions:

1. P.I. No. 0015599, All counties, TMC/ITS Software
ITS in Congressional District 099

Action: Addition to the Program